

Walking School Bus

Guideline, Procedure & Safety Plan

Mount Lawley Primary School
P&C Traffic Management Group

Contents

1.0	Introduction	3
2.0	Safe Routes	3
3.0	Children’s Crossings – Safe Travel	5
3.1	Crossing Guards	6
4.0	Walking Bus Protocol	6
4.1	Safety Steps	6
4.2	Apply SDERA road safety principles	7
4.3	Volunteers	7
4.3.1	Understanding road safety	8
4.4	Attire	8
4.5	Weather	8
5.0	Guardian consent	8
6.0	References	8

Figures

Figure 1 - Your Move Safe Route to School decals	3
Figure 2 - MLPS main site & kindy site locations with Safe Routes and crossings (Maps, 2023)	5
Figure 3 - Crossing guard (https://www.wacsso.wa.edu.au/ , 2018)	6
Figure 4 - Safety steps for the Walking Buses	6
Figure 5 – Izzy the dinosaur & SDERA Smart Steps for crossing roads (SDERA, 2016) (SDERA, Smart Steps Izzy Fact Sheet, 2017)	7

1.0 Introduction

The Traffic Management Group (TMG) is a sub-committee of the Mount Lawley Primary School's (MLPS) P&C. The main aims of the TMG are to:

- minimise traffic congestion around the school
- encourage road and pedestrian safety
- promote active transport including walking, riding, and scooting to and from school.

Further information on the MLPS P&Cs TMG can be found in the Traffic Management Plan, [here](#).

One strategy that can assist in alleviating traffic congestion is a Walking School Bus.

A Walking School Bus is
a group of children who walk to school together
from a designated location along a route accompanied by adults
to ensure they arrive to school safely

The TMG aims to operate a Walking Bus on a regular basis.

2.0 Safe Routes







MLPS Walking Bus follows three separate Safe Routes identified through the Department of Transport's Your Move program, the City of Stirling and MLPS community. Refer to routes overleaf.



Figure 1 - Your Move Safe Route to School decals

Safe Walking Bus Routes

Legend

-  Mt Lawley PS
-  Meeting points
-  Woodsome route
-  Clifton route
-  Clotilde route
-  Safe crossings

MEET HERE:
Corner of Ferrar /
Woodsome St @
8:00AM

MEET HERE:
Corner of Rookwood /
Clifton St @ 8:00AM

MEET HERE:
Corner of Almondbury Rd
/ Clotilde St @ 8:00AM



3.0 Children’s Crossings - Safe Travel

MLPS has four designated crosswalks as identified in the list and map below. The Walking Buses use three of these children’s crossings:

1. Second Avenue and North Street
2. Second Avenue and Clifton Crescent
3. Beaufort Street and Third Avenue
4. Clifton Street and Central Avenue

The Walking Bus Safe Routes help make active transportation safe when commuting from one site to another, or to and from school. The map below shows the Kindy site located in the north-western corner and the main MLPS site off centre to the east, whilst orange circles depict children’s crossings.

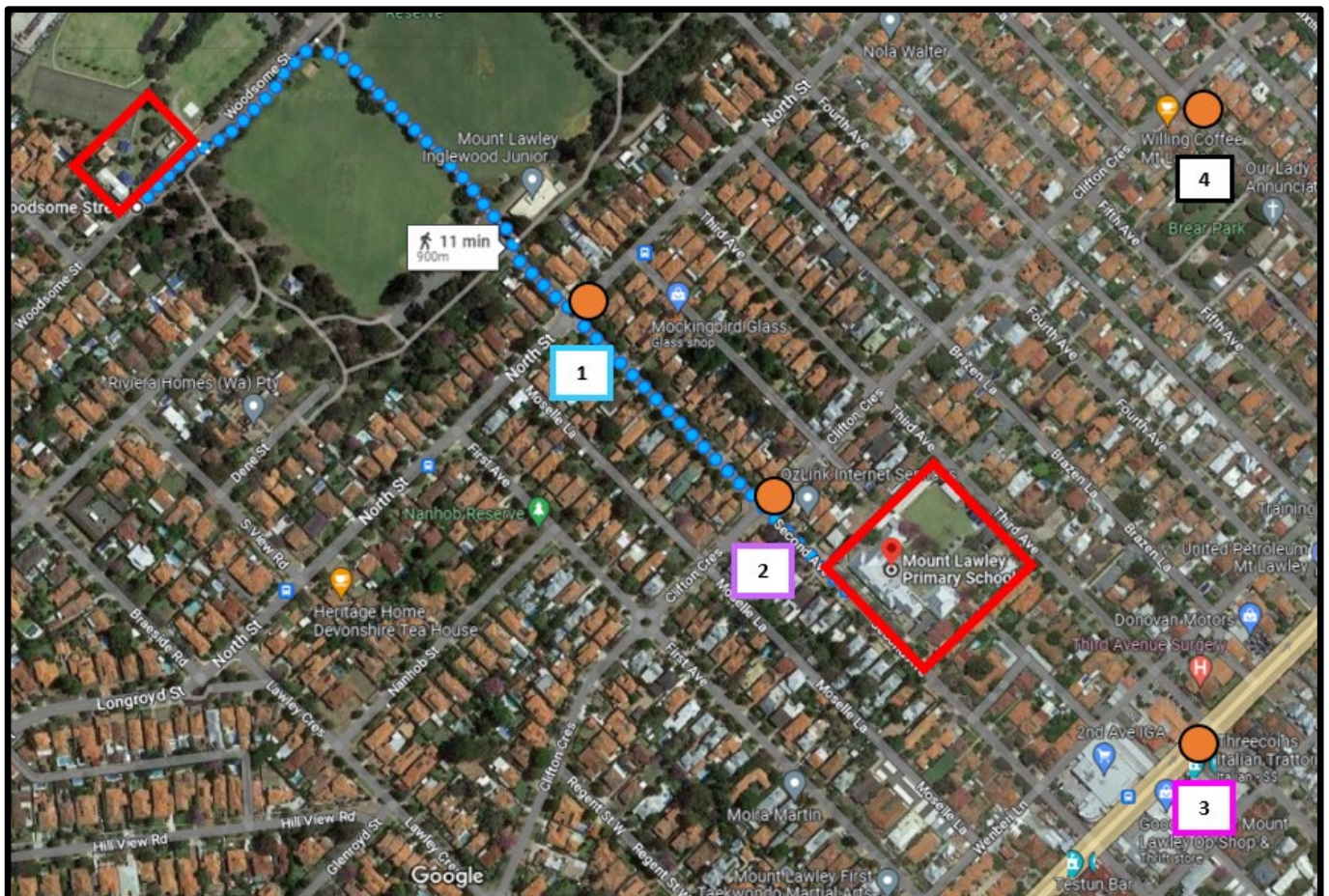


Figure 2 - MLPS main site & kindy site locations with Safe Routes and crossings (Maps, 2023)

3.1 Crossing Guards

The Walking Buses follow the Safe Routes where crossing guards are positioned on busy roads to enable children / adults to walk along safe streets. Vehicles must give way to pedestrians using a crosswalk.



Figure 3 - Crossing guard (<https://www.wacso.wa.edu.au/>, 2018)

4.0 Walking Bus Protocol

Below gives an overview of the steps that will be undertaken to ensure the Walking Buses are safe.

4.1

SAFETY STEPS

- 

1

MEET AT SAFE SPOT @ 8:00AM

Children arrive at Your Move decal safe point on the footpath for an 8:00am Walking Bus departure
- 

2

SAFETY TALK

A brief spiel on Walking Bus etiquette will be conducted, including listen to adults, focus & stick together
- 

3

WALKING BUS ARRANGEMENT

Based on other models, one adult volunteer per 10 children is required. An adult will be positioned at the front of the bus, and also at the back if more than 10
- 

4

FOLLOW SAFE ROUTES

Volunteers and children will follow the Your Move Safe Routes along safe crossings as previously described
- 

5

ARRIVE SAFELY TO SCHOOL

The 3 x safe routes are approximately 15 minutes walk and Walking Buses follow these paths to arrive safely to school

4.2 Apply SDERA road safety principles

The volunteers will ensure Walking Buses follow similar principles as outlined in the Schools Drug Education and Road Aware (SDERA) 'Smart Steps – A Road Safety Booklet for Parents and Carers of Young Children' parent booklet, specifically page 5 of 9 [here](#).

Volunteers will guide the Walking Buses along safe routes. Prior to crossing roads, the volunteers will use SDERA's Smart Steps principles to assist in communicating road safety to children.



Figure 5 – Izzy the dinosaur & SDERA Smart Steps for crossing roads (SDERA, 2016) (SDERA, Smart Steps Izzy Fact Sheet, 2017)

Based on a previous Walking Bus trial MLPS undertook, a few additional tactics will be used:

- older children will be strategically placed to assist younger kids to hold their hand when crossing the road
- reminders will be communicated to children to ensure that they congregate in a tight group to prevent stragglers
- volunteers will gauge a suitable walking pace for the group based on children's abilities.

4.3 Volunteers

The Walking Buses are reliant on volunteers. An adequate number of adult volunteers must be present to supervise children satisfactorily. The TMG will ensure 2 volunteers are present for all walking bus operations and will aim for a ratio of 1 adult per 10 children. The adult to children ratio is deemed manageable to navigate roads safely with children in tow.

4.3.1 Understanding road safety

If parents/carers are interested in becoming a volunteer for the Walking Buses, reference to the Walking Bus Guideline, Procedure & Safety Plan will be recommended so that they become familiar with the document and what is expected when operating Walking Buses.

4.4 Attire

Bright clothing is suggested to be worn by volunteers to ensure visibility to motorists.

Umbrellas are recommended on rainy days.

4.5 Weather

Walking Buses may be cancelled if there are destructive winds and/or heavy rains are present. This will be determined by the volunteers on the day.

5.0 Guardian consent

A parent/carer must give permission for their child(ren) to participate in the Walking Bus via the MLPS Qkr app. A disclaimer and reference to the TMG Traffic Management Plan and Walking Bus Guideline, Procedure & Safety Plan will be provided so that guardians understand how Walking Buses operate and the safety aspects considered.

6.0 References

<https://www.wacso.wa.edu.au/>, W. W. (2018, March 27). WACCSO Children's Crossing Guards. Australia.

Maps, G. (2023). MLPS aerial . Perth.

SDERA. (2016). *Smart Steps - A Road Safety Booklet for Parents and Carers of Young Children*. Retrieved from SDERA: <https://www.sdera.wa.edu.au/media/1343/smart-parent-booklet-2016.pdf>

SDERA. (2017). *Smart Steps Izzy Fact Sheet*. Retrieved from <https://www.sdera.wa.edu.au/media/3219/rs-smart-steps-izzy-fact-sheet-110917.pdf>